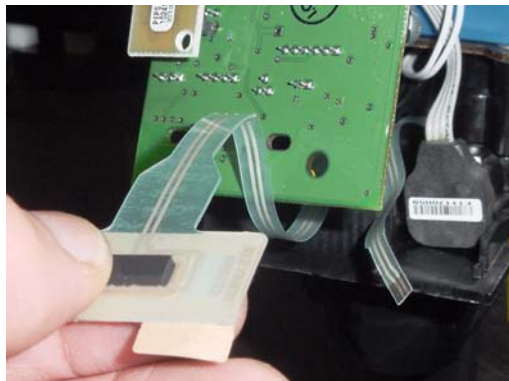
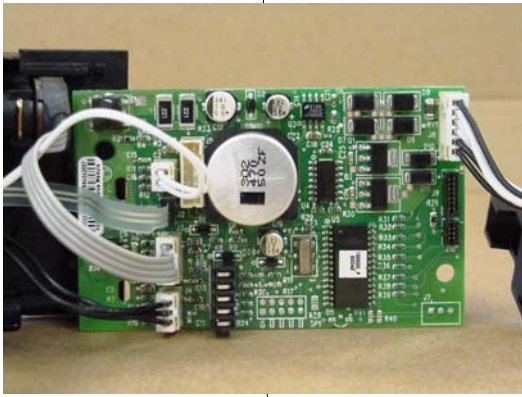
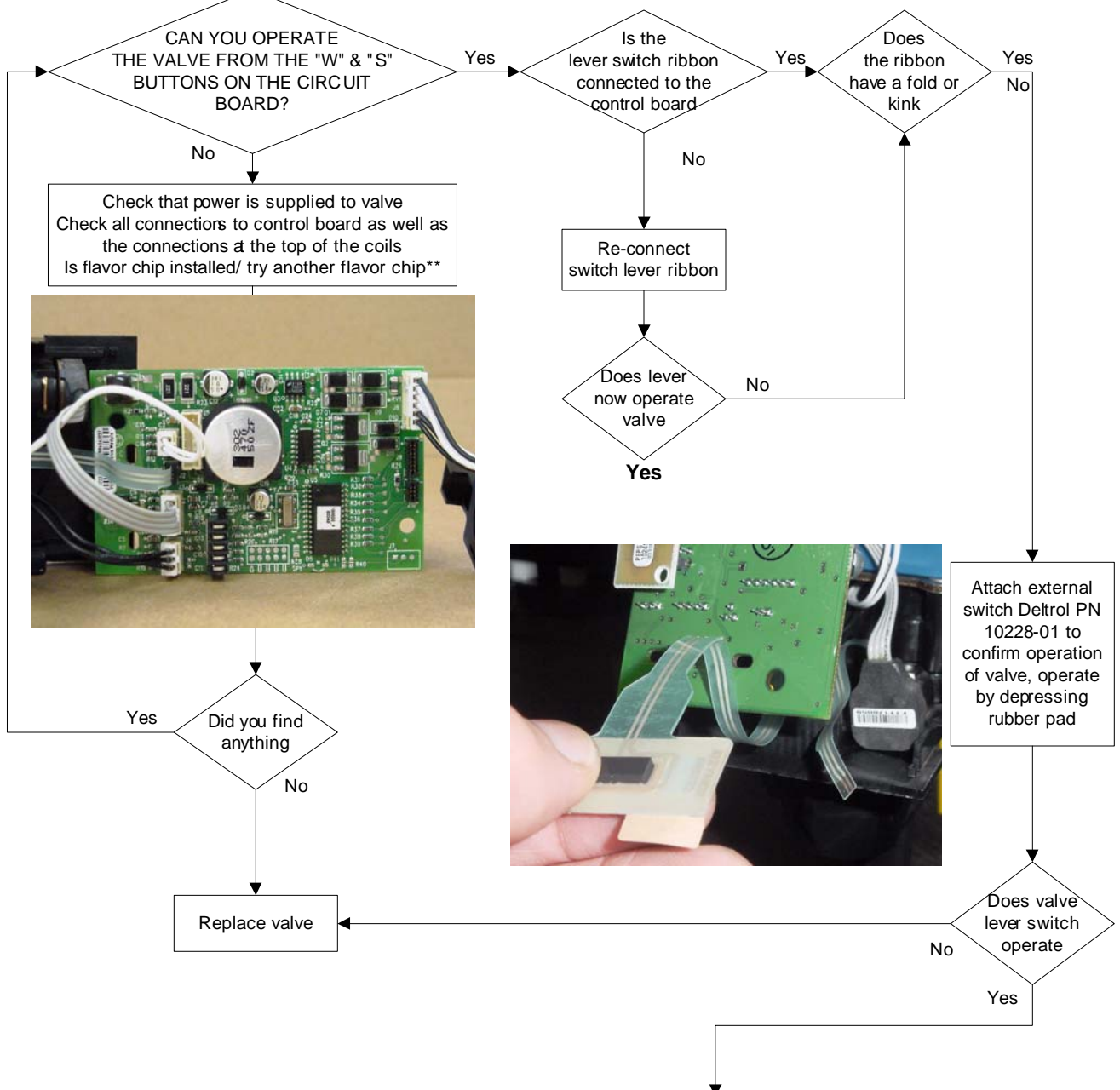
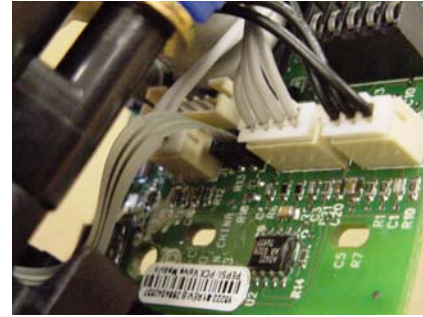
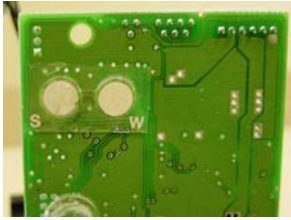


# INTELLIVALVE SELF SERVE LEVER NO-OP



\*\* NOTE: When replacing the flavor chip you must power down and then power up the valve in order for it to read the new flavor chip

Replace leverswitch, follow "Intellivalve Disassembly / Reassembly Instructions" to step 9. Do not remove tubes. Remove old switch and any excess adhesive, place new switch. Take care to dress all wires as they originally were.